



Vyfde uitgawe 2011  
2011

# Koeda

## Pretoria Bonsai Kai

### • Pretoria Bonsai Kai bestuur:

- Voorsitter – Org Exley  
082 809 2037
- Onder voorsitter – Brandon Roode  
083 399 1997
- Tesourier - Daan du Toit  
012 567 2520
- Sekreteressee – Mariaan Erwee  
083 377 7893
- Skakelbeampte—Christa Vermaak  
083 388 4736
- Addisionele lede :  
Otto Koekemoer  
Ben Kruger  
Martin Kruger  
Johan Els

The word Koeda is Japanese and means: 'Graceful branch'. It is pronounced Ko-eda.

### Van die redakteur.

#### Dear member

For many members of various bonsai clubs one of the highlights of the year must surely have been attending the Third African Bonsai Convention that was held in Durban. It was a wonderful opportunity to learn more of bonsai from internationally recognized bonsai masters, and also a great experience to rub shoulders with other bonsai enthusiasts from all over South Africa.

reeds jou bome oorgeplant het. Jy kan egter nog steeds tot in November jou Wilde Vye oorplant. Ons reën het nog nie werklik arriveer nie en ons bome raak vinnig droog in die warm sonskyn weer. Wees dus spesiaal op jou hoede met watertoediening. Kyk gerus na Francois se raad op bladsy 20 in sy gereelde ka-lender.

Ek versoek julle steeds om fotos van mooi bome in die natuur asook artikels aan my te stuur.

Bonsai groete  
Jaco

Enige idees, artikels of terugvoering rakende die nuusbrief kan gegee word aan Jaco Kriek by:

Jaco.kriek@aurecongroup.com

### In hierdie uitgawe

Van die Redakteur.	1
Briewe bus / Vra is vry	2
Klippe optel	5
Vergadering 2 Julie	7
ABC 3 convention	9
Indigenous tree	14
Vergadering 1 Oktober	15
Bonsai dig	17
Demonstrasie terugvoering	19
Bonsai kalender	20
Snippets	21

The problem some members have in attending such a convention is that it is costly. Not only getting there and finding, and having to pay for accommodation, but also the convention fee. The Eastern Bonsai Society is hosting the SABA convention in October 2013, and have come up with a plan to make it possible for as many members to attend as possible. Read about their plan on page 3 of this addition.

Teen hierdie tyd moet jy al



**If you think it needs repotting  
it probably does.**

## Briewe Bus / Vra is Vry

Die volgende brief is per e-pos ontvang:

Hi,

I have been reading, studying and working on bonsai for four years...with a few losses and a lot of gain. My trees are mostly from seed and most of them is still very young and I await the result once they are big and strong. I have done air layering on big trees to form smaller bonsai.



But now, my problem is:

- \* How do you get a branch to grow in an area where you want one on the trunk, but without grafting?
- \* And how do I bend the branches which are too thick for wire..

The thing is, I am restricted to my normal basic tools.

I would appreciate it if I can have feedback on my two questions, please note that using a branch bending tool is out of the question. I would love some feedback on DIY tips for my questions.

Jaco Strauss

Red: Charles Ceronio gives an answer on page 4.

Jaco

Baie dankie vir die elektroniese Koeda 4.

Vir my as nuwe lid is dit ongelooflik om so 'n wye reeks onderwerpe van toepassing op ons omstandighede in een uitgawe te kry

Dit maak my ook opgewonde om vorentoe deel van so 'n aktiewe Bonsai Klub te wees

Vriendelike groete

Osie van Niekerk



Vervolg op bl 3.....

## Briewe Bus / Vra is Vry

**Subject: The “Pay It Forward” Programme SABA 2013 convention**

The EBS Convention 2013 Committee are planning to bring in 2 world class bonsai demonstrators to teach us more about how they approach the art of bonsai.



One of the difficulties we all have in attending any SABA Convention is cost, we believe that to make it more affordable to attend the Convention, we all need to start saving a small amount every month. We at EBS have therefore started the “Pay IT Forward” programme at our club whereby every month those members that want to attend the Convention are making a R50.00 payment at every club meeting.

EBS announced the “Pay It Forward” program at the ABC3 Convention, recently held in September 2011 in Durban.

If a payment of R50.00 is made every month, from October 2011 to October 2013 (a period of 24 months), then that person would have saved R1,200.00 towards the cost of attending the 2013 Convention, i.e. less than the cost of a meal out with family or friends. The final convention cost has not been determined yet but EBS commits to providing those people that join the “Pay It Forward” program with a *very special Early Bird discount on the attendance price. Please note and make your members aware that this special Early Bird discount will only apply to those members who start with the “Pay It Forward” from either your monthly meeting held in December 2011 or January 2012.*

We would appreciate it if your club could identify one of your members to be your club coordinator to drive the “Pay It Forward” initiative. The coordinator will help us motivate your club members to follow the example set by EBS members and collect the minimum of R50.00 per individual per month.

In this way we can create a fund to help EBS to afford to pay for some of the early convention costs and for your members to secure the special attendance discount.

When receiving monies, the coordinator also needs to keep a schedule, issue a receipt and deposit the monies collected every month into the EBS bank account (see details below) using the Club name, month and EBS 2013 as a reference and email the proof of deposit to us. If your members prefer to do an EFT transfer then they must please use their name, club name and EBS 2013 as the reference and send us an email. EBS will administer the funds.

The Bank Account details are:

Eastern Bonsai Society

Bank: ABSA

Branch: Sandton

Acc No: 711-951-156

The SABA convention 2013 theme is “The Living Art of Bonsai”

This is a wonderful incentive to make the convention cost more affordable to all Bonsai Club members.

The only additional expense would be for visitors from outside Gauteng area would be their transport and accommodation costs to the Convention.

EBS will also be approaching their members to see whether they will be prepared to provide accommodation for convention attendees in their homes.

We need every club in South Africa to commit to the “Pay It Forward” programme to make the next convention a roaring success.

Please contact Errol Rubin and me on our emails at: [bonsai@pixie.co.za](mailto:bonsai@pixie.co.za) and [barbarav@mahoganyprivateequity.co.za](mailto:barbarav@mahoganyprivateequity.co.za)

We are waiting on your reply.

Thanks and regards

Barbara

## Briewe Bus / Vra is Vry

Charles Ceronio answers the question of the first letter as follows:

### Question 1

Answer: You can encourage a bud to grow where you want it by cutting half-way around the trunk with a sharp knife.

Alongside the trunk there are numerous "sleeping or dormant " buds which can be activated by cutting through the bark. The reason why this method works is that the sap flow is cut off and the tree has to look for alternative ways to survive. It therefore will force a dormant bud to sprout out. The moment the dormant buds appears, one can select a bud that will become the future required branch.



### Question 2

This is a more tricky question and requires more technical skill from the grower.

It is difficult to answer the question in a few words and I would suggest that the grower attend one of our workshops .

I include a few photos to illustrate what one can do with a thick branch.

The tree in question was demonstrated by Jurgen Zaar from Germany at the latest European Bonsai Convention in Vilnius, Lithuania.

Here is a few pictures of the tree.

As can be seen, the tree was really big. Jurgen chopped it down and only left one branch.

He then cut out more than 1/2 of the trunk and fastened a number of heavy copper wires in the space where he thinned out the trunk.

He was then able to bend the trunk and the end-result can be seen in the last picture.



## Klippe optel.....

Die oes van klippe het plaasgevind op 27 Augustus langs die M57 pad halfpad tussen die Rietvlei dam en die St Georges hotel. Twaalf lede van die kai het onder baie warm sonnige toestande met groot ywer en sukses 'n hele klomp baie mooi en bruiksame klippe gekry. Daar het 'n hele klompie 'tips' te voorskyn gekom oor wat benodig word by so 'n geleentheid. Behalwe vir 'n hoed, sonbrand room en handskoene kan jy op die fotos en hul onderskrifte sien wat van die lede nuttig gevind het. Groot dankie aan Brandon Roode wat die uitstappie gereel het.



Osie se koevoet .....



en Francois se pik was handig.

Vervolg op bladsy 6.....

'n Lekker sterk sak of 'n emmertjie om die klippe in te dra.



Attie het 'n geologiese hammer gebruik en Annelie 'n skroewedraaier om te grawe.

## Klippe optel....vervolg



**Klein outjies het die groot klippe gesoek en groot ouens klein klippies.**



**Annelie het elke klip in koerant papier togedra voordat sy hulle in sakke gepak het. Sy sê hulle maak dan nie merke op mekaar nie.**

## Vergadering van 2 Julie - verslag deur Brandon Roode

### Oom Theuns se wortel oor rots met klein vyeboompies



Oom Theuns sê hy kweek stig-gies in 'n diep houer (hy gebruik somer melkboksies). Die wortels word toegelaat om lank uit te groei. Hy gebruik 'n rots met 'n goeie voorkant met 'n growwe tekstuur.

Die boompie word aan die klip vasgemaak met 'n stukkie draad wat eenkeer om die boom en klip gedraai word. Die wortels word dan op die rots geplaas.

Hy gebruik 'n klouerige mengsel van kleigrond, fyn sand en kompos wat hy dan oor die wortels smeer en

vasmessel aan die rots. Die wortels bly dan vas aan die rots. Hy los die klei so aan die wortels oornag en druk dan die klei weer styf aan die klip die volgende dag. Die wortels wat onder die klip uitsteek word stewig onder die klip ingestek.

Oom Theuns vat dan 'n plastieksak (die soort waarin jy brood koop) en draai dit om die wortels en die rots. Dit hou die wortels styf teen die klip vas en voorkom dat die kleigrond afwas.

Die wortels groei dan mooi vas aan die rots binne 'n paar maande.



Vervolg op bl 8.....

## Vergadering van 2 Julie - vervolg



### **“Tip of the month” - deur Oom Edwin Morgenrood**

Oom Edwin het die lede herinner aan hoe belangrik dit is om gereeld seker te maak dat al jou bome water kry as jy van outomatiese oorhoofse besproeiing gebruik maak.

Gaan elke boom individueel na en maak seker genoeg water kom in aanraking met die grond. Hy het aan ons gewys wat gebeur het met een van sy cotoneasters wat doodgegaan het van te min water. Die bonsaibak se “nek” was klein en toe die kroon te dig raak (‘n sogenaamde “sambreel effek”), het daar amper geen water by die boom se wortels uitgekam nie. Dit kan gebeur, selfs al besproei jy jou bome elke dag.

Hy het aan die lede verduidelik dat erdwurms normaalweg goed is vir mens se tuingrond, maar dat erdwurms nie in die bonsaiboom se grond toegelaat moet word nie. Die wurm breek nie net humus teen ‘n geweldige spoed af nie (wat lei tot fyn grond) maar die wurms gebruik ook baie van die grond se voeding. Hy het laastens aan die lede die volgende resep vir die bekamping van algemene peste (insluitend “thrips”) gegee:

1 teelepels Scrubbs Amonia

Epson Salts

Seagrow

Sunlight Liquid

Jeyes Fluid

In 1 liter water.

Spuit elke 2 tot 3 weke





## 3rd African Bonsai Convention

The third African Bonsai Convention was held in Durban during the weekend of 23 to 26 September. The venue was excellent with different areas for the exhibition, lectures, workshops, sales area as well as a place for tee and eating.

The headliners were Bill Valavanis and Robert Stevens. It is impossible to report on everything that took place over the whole weekend and therefore only a couple of photos of some of the demonstrations conducted by the two headliners are shown.

**Bill Valavanis** is from the USA. Bill has 46 years experience in bonsai. He studied bonsai in Japan and has also graduated from the State University of New York in 1971, majoring in Ornamental Horticulture. Bill is publisher and editor of International BONSAI magazine reaching over 50 countries.

**Robert Stevens** is from Indonesia. He started creating and collecting bonsai in 1979, and currently has a permanent exhibit centre where he displays his bonsai collection of over 300 trees. Robert has won more than 50 competition awards nationally and internationally.

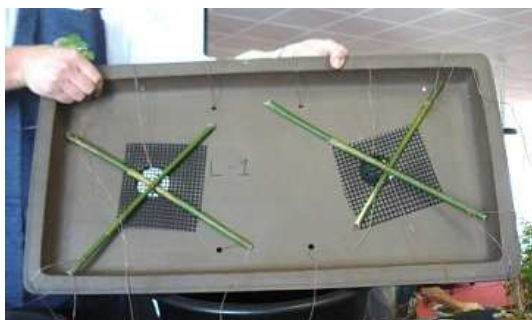
Robert believes that “we should involve our emotion to express our character and message in order to give the 'soul' to the tree.”



Bill was given the trees above to create a forest.

Top right: Bill busy creating his forest.

Bottom right: The completed forest.



Bill tied bamboo sticks to the bottom of the pot which he used for securing the trees in the pot.



Continue on page 10.....

## 3rd African Bonsai Convention



Bill demonstrated on this Black Pine how he bends down a very stiff branch which cannot be bend with normal wiring. Bill uses a chisel and hammer (bottom left) to 'break' the branch from the trunk. He then pushes a stone into the gap and covers the wound with cut paste. He says that as the wound heals the cambium pushes the stone out. The photo top left was before and bottom right after the bending. Bill transplanted the tree at a slight angle.



Continue on page 11.....

## 3rd African Bonsai Convention

Robert is known for his simplistic trees, where less is more. He demonstrated this on the Elm shown below. Robert says that he actually hates demonstrations, because bonsai is a long term thing and a demonstration is short. If he doesn't cut anything he looks stupid, and if he cuts away everything like he normally does to start from scratch he looks silly. He has therefore made himself some artificial branches which he places on the trunk to show what he plans for the future.



Left: The artificial branches on the trunk. Right: During lunch time someone placed lettuce leaves on the branches.

Continue on page 12.....

### 3rd African Bonsai Convention

Robert rearranged the Celtis forest indicated below. He also transformed a Wild Olive from a bush to a beautiful cascade. See bottom of page.



Continue on page 13.....



## 3rd African Bonsai Convention



Above: The sales area



Above: Some of the trees on display



Above: Some of the trees on display



Above: A couple of the Pretoria kai members with Bill Valavanis

## Indigenous Southern African trees suitable for Bonsai: *Coleonema album*.

Common names:

Cape may, confetti bush.

Afrikaans: Sasbossie, Klipboegoe.

*Coleonema album* occurs from Saldanha Bay to the Cape Peninsula and as far east as Bredasdorp. It appears to be very much a coastal plant, able to withstand strong coastal winds. Plants are found growing amongst outcrops of rocks of the Table Mountain.



This species requires full sun and soil that is acid, well drained and composted. Plants require good watering in winter and moderate watering in summer. Do not allow plants to dry out, although can withstand drought.

It grows easily from seed. They can be fed regularly with a balanced nutrient. Yellow leaves can be treated with an application of iron chelate.

The aromatic leaves containing essential oils are used by fishermen to remove the odour of redbait from their hands. Campers rub the leaves onto their bedding to keep ants and mosquitoes away. The leaves are used in potpourri.

This is an erect, much-branched and compact shrub that grows to a height of 2m. It is finely branched and new shoots develop at the tips of old branches. Branching occurs from the base of the shrub. The bark is greyish-brown, rough with horizontal leaf scars. Closed flower buds are pinkish tinged and appear white when open.

Flowers are small, white, 6-7 mm in diameter with a dark green disc at the centre. The flowers are carried in such profusion that the bush is a cloud of white when in flower and attracts bees and butterflies. It flowers from May to November.

Leaves are needle-like. Oil glands are visible on the reverse side of the leaves. The leaves when crushed have a characteristic sweet smell.

Ripe fruits may be found up to the end of November. The fruit is 5-lobed and ripe seed are ejected by a catapult mechanism. Regeneration takes place from seed.



***Coleonema album*.**

Carl Morrow says the following about the Cape May: "This beautiful little bush develops into bonsai with rugged trunks, tiny leaves and pretty white or pink flowers. The branches are brittle, so be careful when wiring or bending them. If a branch does snap, the tree helps by producing numerous buds from the mature wood. Trees flower well if they are kept slightly pot bound and they shouldn't be pruned after February because the flowers are setting at this time. After flowering is a good time to give an annual hard prune into shape to maintain the compact beauty of the tree.

After flowering is a good time to give an annual hard prune into shape to maintain the compact beauty of the tree.

Repotting should be done in spring.

They produce masses of fine roots that fill the pot rapidly and it is best to remove only these roots rather than being too vigorous and bare rooting the tree as this will set it back considerably. ♣



## Vergadering van 1 Oktober 2011.

As mens kyk na die hoeveelheid bome wat gebring was om aan te werk kan mens sien dat die somer en die groeiseisoen hier is. Dit was lekker.

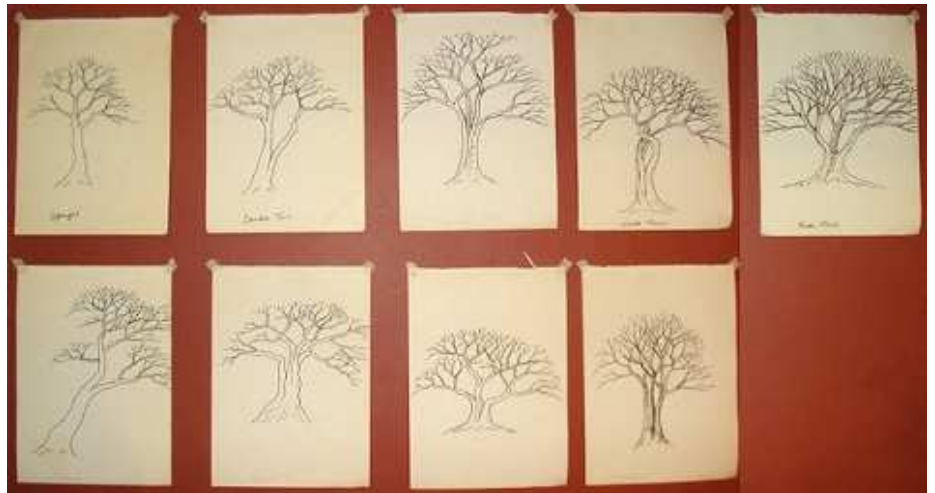
Vervolg op bl 16.....



## BRAT vergadering van 30 Julie 2011.

Die tema van die vergadering was die Bosveld styl, en is aangebied deur Charles Ceronio. Charles het oom Edwin gevra om die stukkie uit sy boek wat die bosveld styl beskryf voor te lees.

Bushveld trees have specific natural characteristics and the branch structure is very informal and zigzagged. The dry conditions hamper the development of these trees, resulting in their unique forms. This style differs from the Pierneef, wild fig and informal broom styles in that it does not have a specific shape or form. The silhouette line may be oval, round or umbrella-shaped; the trunks and main branches may curve and even cross each other; and the branches may intertwine. The main objective is to achieve a natural appearance and radiate an air of strength and endurance. As the style simulates the effects of a harsh environment, the foliage should be sparse.





## Bonsai 'dig' – Yamadori, Saterdag 23 Julie 2011 - deur Francois van As

Waar: Koegahawegebied – Port Elizabeth



Op Vrydagoggend, 22 Julie, vertrek Org, Brandon, Hannes, Dirk en Francois vanaf Org se huis na Port Elizabeth - ons missie: die uitgrawe van potensiële bonsai. In Johannesburg sluit Erich Walters by ons aan. Laat middag kom ons in 'n nat PE aan. Die Pretoria groep gaan tuis in Jeffreysbaai.



Saterdagoggend vroeg vertrek ons terug na PE en langs die pad sluit twee kapenaars, Terry en Alastair by ons aan. In PE ontmoet ons die Eastern Provence Bonsai Kai onder leiding van Ockie Goosen vir verdere instruksies waarna ons na die "dig site" vertrek.

Die weer het mooi saamgespeel en ons kon die hele dag in ideale bewolkte omstandighede grawe. Gelukkig het Ockie vir elkeen van ons 'n hulp gereël, anders sou ons dit nooit gemaak het nie. Die ervare manne het baie gou potensiaal "gespot" en onmiddellik weggeval. Die onervare ouens, soos ek, moes eers rigting vind, maar toe dit gevind is was daar geen keer nie. Daar is meestal Oliehout uitgegrawe, 'n paar Karoo boerbone en Org het 'n



mooi Holly uitgegrawe. In totaal het die groep 50 bome uitgegrawe. Laat middag het elkeen sy bome begin voorberei vir die lang tog

huistoe. Onnodige wortels en takke is verwyder, die wortels is toegedraai in koerantpapier of hessian, natgemaak en in plastieksakke toegedraai. Hierna het vyf moeë maar hoogs tevrede manne terug na Jeffriesbaai vertrek. Vervolg op bl 18...



## Bonsai 'dig' – Yamadori, Saterdag 23 Julie 2011 - deur Francois van As

Wes, se artikel, "Olive dig in PE" op [www.bonsaitree.co.za](http://www.bonsaitree.co.za)

Francois van As



Sondagoggend baie vroeg is ons in gietende reën daar weg. Laat middag is ons terug by Org se huis waarna elkeen so gou moontlik tuis wou kom om sy bome te versorg.



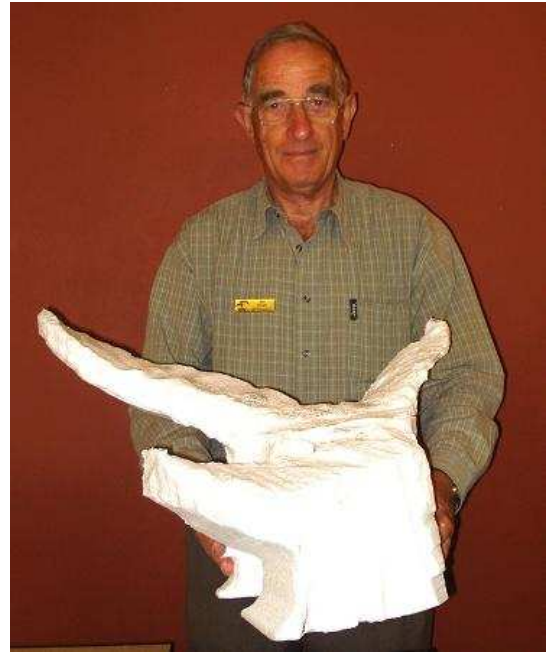
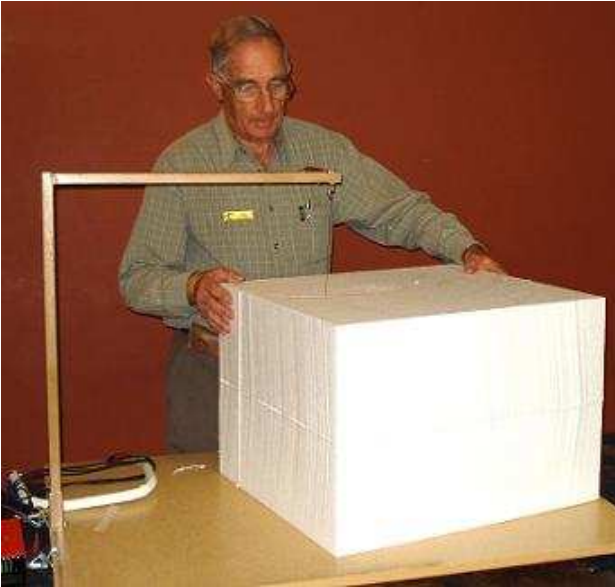
Dankie aan Org vir sy puik reëlings asook Ockie van die Eastern Provence Bonsai Kai wat die "dig" moontlik gemaak het.

Kyk gerus ook na Terry Erasmus, van Somerset



## Terugvoering oor demonstrasie.

Gedurende die vergadering van 5 Junie 2010 het Ben Kruger aan die lede demonstreer hoe hy, onder andere, rotse maak uit 'polystyrene'. Nadat die rotse gevorm is verf Ben dit dan met 'cemcrete' of verf en plaas ook op sommige sand om dit 'n natuurlike voorkoms te gee. In Koeda uitgawe drie 2010 is die twee fotos onder geplaas van die blok 'polystyrene' voor Ben hom gesny het en nadat hy gesny is. By die vergadering van 1 Oktober 2011 het Ben gewys hoe sy skepping nou daar uitsien, heel onderste foto.



## Bonsai Kalender – Deur Francois van As

### November en Desember

Dit raak nou middel somer en ook die warmste tyd van die jaar wat natuurlik die grond in ons Bonsaipotte vinnig laat uitdroog. Om die vogbalans in die sisteem in stand te hou moet daar konstant genoeg vog in die grond teenwoordig wees. Om hieraan te voldoen is dit uiters belangrik dat 'n grondmengsel wat goed dreineer, gebruik word. As die medium nie goed dreineer nie kan die wortels nie effektief 'asemhaal' nie en kan die wortels begin vrot. Water-toediening is dus uiters belangrik en wanneer dit baie droog is moet tweemaal per

dag water gegee word, vroeg in die môre en laat in die aand.

Alle Bonsai moet gedurende die groeiseisoen gevoed word. Bome wat nie voldoende voeding kry nie, is ellendig en geneig om terug te sterf. Daar word van 'n boom, wat vasgevang is in 'n beperkte ruimte, verwag om sy welstand te handhaaf, veral wanneer dit voortdurend aan snoei- en styleringsaktiwiteite blootgestel word. Voeding speel dus 'n baie belangrike rol in die lewenskragtigheid van elke Bonsai. Gevestigde Bonsai kan egter minder gevoed word as ontwikkelende bome.



Gereelde verfyningsnoei kan toegepas word en lang groeipunte moet ook teruggesnoei word. Jong takkies kan ook nou reeds bedraad word.

Warm, vogtige toestande bevorder peste, hou dus dop en behandel vroegtydig. ♣

## Motivation.

Often we are not sure what styling to apply to our trees. These pictures show what Tony Tickle from England did to his Juniper.



## Snippets

### Our Environment.

Recycling is not something many of us are doing yet. Just think of the following:

If all of the newspapers printed in the U.S. on a typical Sunday would be recycled, they would save 550,000 trees -- or about 26 million trees per year.

Start recycling and help save our planet!



### Inspiration from nature



**Nebari** - also known as "buttressing", is the visible spread of roots above the growing medium at the base of a bonsai. Nebari help a bonsai seem grounded and well-anchored and make it look mature, akin to a full-sized tree.

**Louis van der Walt** took this photo of a Wild Fig in one of the camps in the Kruger National Park. Surely most bonsai growers would love to have this kind of nebari in their bonsai.